



# LILY

A shawl pattern by knitboop

---

**LILY**  
**SHAWL**  
knitboop

---

**SIZES**                    One size, but the pattern may be modified to include more or less sections, making the size customizable.

**YARDAGE**            Color 1 (C1) :        350 yards  
                          Color 2 (C2) :        400 yards

Sample is knit in Seismic Yarns' Butter Sock in 5 Star Island (C1), and Lace Luxe and Fluff in Charcoal held double (C2).

**GAUGE**                    Approximately 20 stitches and 46 rows = 4 inches in garter stitch, blocked

**NEEDLES**                US 6, or appropriate size to obtain gauge listed

**MISC  
TOOLS &  
NOTIONS**                Tapestry needle for weaving in ends  
                                  Blocking materials (pins and mats) are also recommended.

**ABBREVIATIONS**      K :                    Knit  
                              P :                    Purl

                              \* \* :                    Repeat instructions inside asterisks.

                              st :                    stitch  
                              sts :                    stitches

                              Sl 1 kw :            Slip 1 stitch as if to knit, holding yarn in front.

                              Kfb :                    Knit in the front and back loops. 1 stitch increased.  
                              YO :                    Yarn over. 1 stitch increased.

                              K2tog :                Knit 2 stitches together. 1 stitch decreased.

                              Ssk :                    Slip 2 stitches as if to knit, knit them together.  
                                  1 stitch decreased.

                              Sl2k1p2sso :        Slip 2 stitches as if to knit, k1, pass the 2 slipped stitches over the knit stitch. 2 stitches decreased.

---

**LILY**  
**SHAWL**  
knitboop

---

Using C1, cast on 4 sts.

K1, kfb, k until 2 sts remain, k2tog.

Sl 1 kw, k until 2 sts remain, kfb, sl 1 kw. (1 st increased.)

Repeat the last two rows 10 more times (for a total of 11 times). You will now have 16 sts on your needles.

Begin with **Garter Chart**. All charts may be found on page 6.

Written instructions are as follows:

Row 1 :	K1, kfb, k until 2 sts remain, k2tog.
All even numbered rows :	Sl 1 kw, k until 2 sts remain, kfb, sl 1 kw.
Row 3 :	K1, kfb, k until 2 sts remain, k2tog.
Row 5 :	K1, kfb, k2, *yo, k2tog* until 4 sts remain, k2, k2tog.
Row 7 :	K1, kfb, k until 2 sts remain, k2tog.
Row 9 :	K1, kfb, k until 2 sts remain, k2tog.
Row 11 :	K1, kfb, k until 2 sts remain, k2tog.
Row 13 :	K1, kfb, k until 2 sts remain, k2tog.
Row 15 :	K1, kfb, k3, *yo, k2tog* until 4 sts remain, k2, k2tog.
Row 17 :	K1, kfb, k until 2 sts remain, k2tog.
Row 19 :	K1, kfb, k until 2 sts remain, k2tog.

Repeat the Garter Chart instructions 2 more times, for a total of 3 repetitions.

---

**LILY**  
**SHAWL**  
knitboop

---

Proceed with **Stripes 1**.

Attach C2.

Using C2, K1, kfb, k until 2 sts remain, k2tog.

Sl 1 kw, k2, p until 2 sts remain, kfb, sl 1 kw.

Using C1, K1, kfb, k until 2 sts remain, k2tog.

Sl 1 kw, k until 2 sts remain, kfb, sl 1 kw.

Repeat the last four rows 4 more times (for a total of 5 times).

Cut C1, proceed to the lace chart with only C2.

Begin with **Lace Chart**.

Written instructions are as follows:

Row 1 : K 1, kfb, k until 2 sts remain, k2tog.

All even numbered rows : Sl 1 kw, k2, p until 2 sts remain, kfb, sl 1 kw.

Row 3 : K 1, kfb, k1, \*k1, k2tog, yo, k1, yo, ssk, k4\* until 4 sts remain, k2, k2tog.

Row 5 : K1, kfb, k2, \*k1, k2tog, k1, yo, k1, yo, k1, ssk, k2\* until 4 sts remain, k2, k2tog.

Row 7 : K1, kfb, k3, \*k1, k2tog, k2, yo, k1, yo, k2, ssk\* until 4 sts remain, k2, k2tog.

Row 9 : K1, kfb, k 1, yo, k2, \*k1, sl2k1p2sso, k3, yo, k1, yo, k2\* until 5 sts remain, k1, k2tog, k2tog.

Row 11 : K1, kfb, k until 2 sts remain, k2tog.

Row 13 : K1, kfb, k6, \*k1, k2tog, yo, k1, yo, ssk, k4\* until 4 sts remain, k2, k2tog.

Row 15 : K1, kfb, k2, yo, k1, ssk, k2, \*k1, k2tog, k1, yo, k1, yo, k1, ssk, k2\* until 4 sts remain, k2, k2tog.

Row 17 : K1, kfb, k4, yo, k2, ssk, \*k1, k2tog, k2, yo, k1, yo, k2, ssk\* until 4 sts remain, k2, k2tog.

Row 19 : K1, kfb, k6, yo, k2, \*k1, sl2k1p2sso, k3, yo, k1, yo, k2\* until 5 sts remain, k1, k2tog, k2tog.

Repeat the Lace Chart instructions 2 more times, for a total of 3 repetitions.

---

LILY  
SHAWL  
knitboop

---

Proceed with **Stripes 2**.

Attach C1.

Using C1, K1, kfb, k until 2 sts remain, k2tog.

Sl 1 kw, k until 2 sts remain, kfb, sl 1 kw.

Using C2, K1, kfb, k until 2 sts remain, k2tog.

Sl 1 kw, k2, p until 2 sts remain, kfb, sl 1 kw.

Repeat the last four rows 4 more times (for a total of 5 times).

Cut C2, proceed with only C1.

Work **Garter Chart** as before for a total of 3 repetitions.

Work **Stripes 1** as before, attaching C2 and cutting C1.

Work **Lace Chart** as before for a total of 4 repetitions.

Work **Stripes 2** as before, attaching C1 and cutting C2.

Work **Garter Chart** as before for a total of 1 repetition.

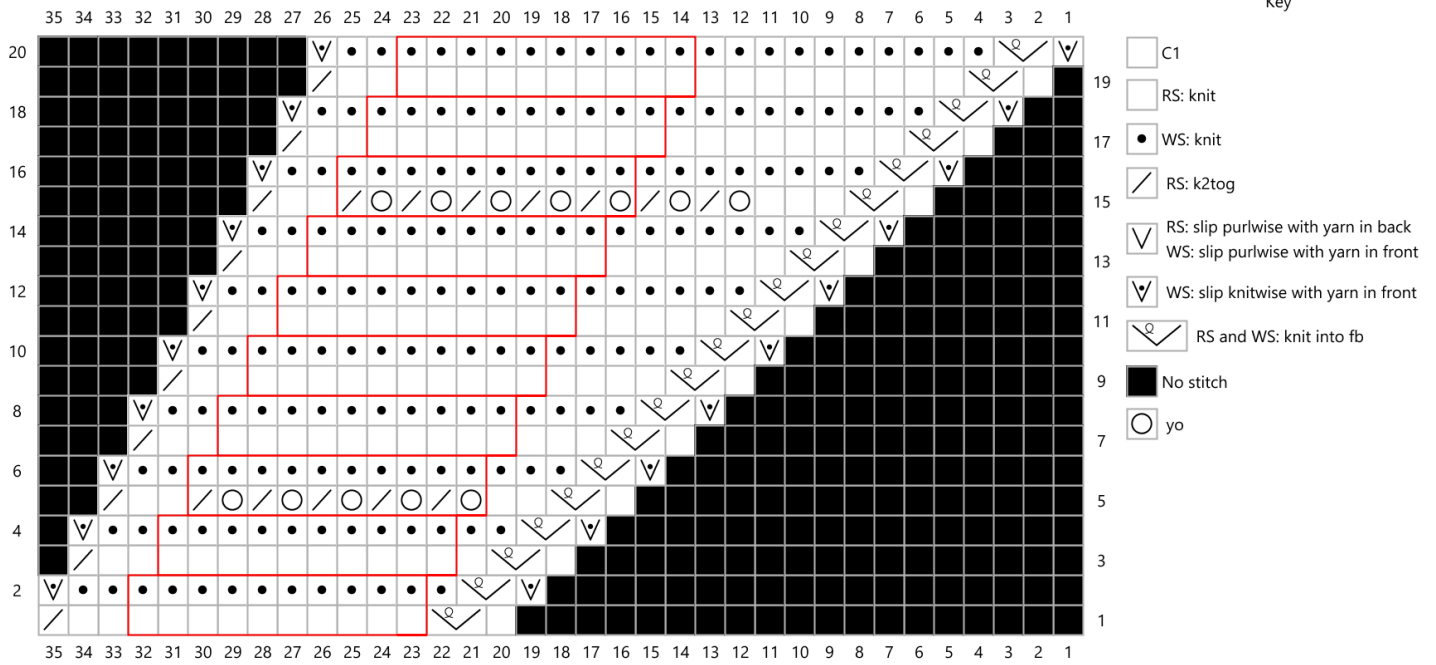
Bind off loosely.

Block, and enjoy!

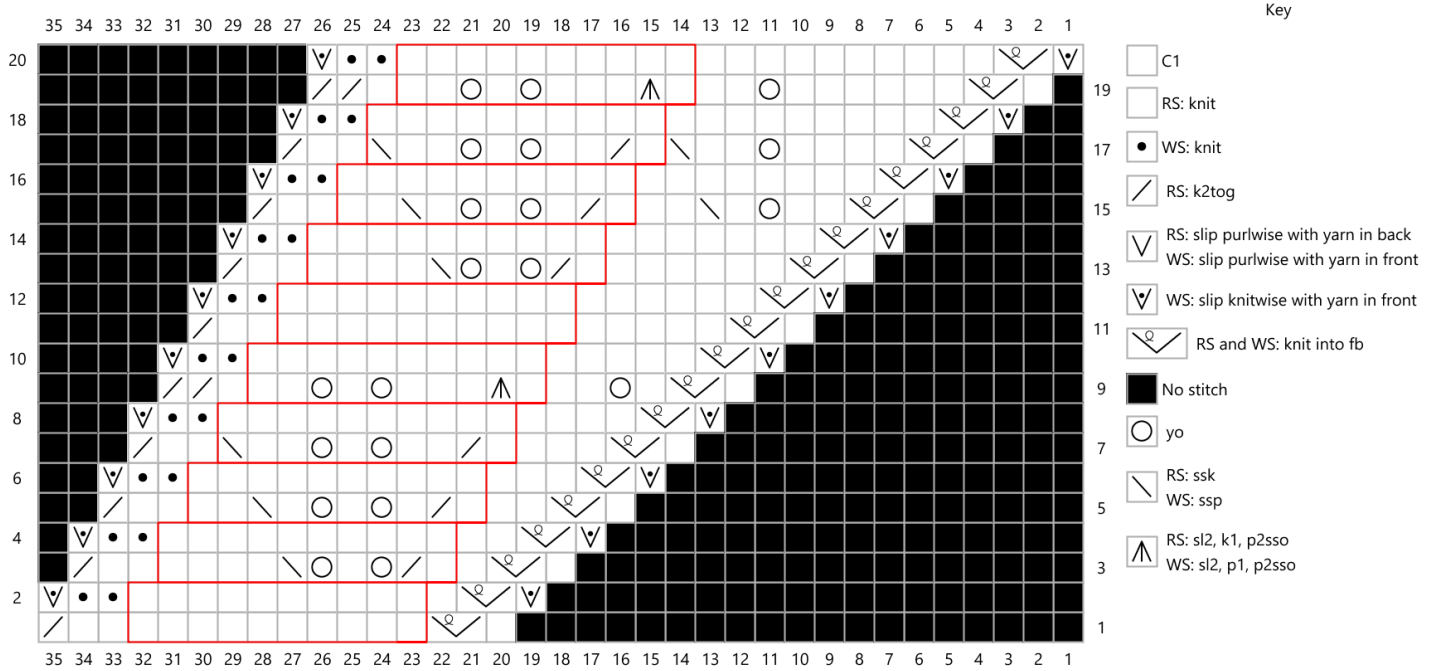
# LILY SHAWL

knitboop

## GARTER CHART :



## LACE CHART :





---

# LILY SHAWL

knitboop

---



Please feel free to contact me for pattern support.  
If you like my work, consider tipping me through [ko-fi.com/knitboop](https://ko-fi.com/knitboop)  
Website: <https://www.knitboop.com/>  
Instagram: [@knitboop](https://www.instagram.com/knitboop)  
Feel free to sell completed projects.  
However, please do not distribute the pattern without permission.

Many thanks for [Seismic Yarn](#) for the yarn collaboration.

Many thanks to my test knitters: [chronicallyknitting](#), [gilliamschwarz](#), [kalokshekellen](#), [kellsminells](#),  
[liv.knits](#), [swampysquidknits](#), and [yarnandsarcasm](#)