



# MALUS SHAWL



a shawl pattern by knitboop

“By the pricking of my thumbs,  
Something wicked this way comes...”

Get ready to embrace your inner witch, and welcome the cooler months with the Malus Shawl! Perfect for wrapping up in while you enjoy a warm beverage of your choice, this shawl features mosaic and lace stitches to show off your favorite skeins of yarns. Choose a high-contrast set for a dramatic flair, or opt for something more subtle and bright...the choice is yours.

# MALUS SHAWL



## SIZES: REGULAR, (LARGE)

Regular: approx. 57" (144cm) wingspan x 14.5" (37cm) depth

Large: approx. 69" (175cm) wingspan x 19.5" (50cm) depth

## YARN AND YARDAGE:

2 colors of fingering weight yarn:

C1: 300 (350 or 550) yards

C2: 250 (575 or 375) yards

Two sets of yardages are given for Size Large, depending on which color you choose for the final garter lace section.

Suggested yarn: Rebel Purl 4 Plies of the Apocalypse

Sample is knit in the colorways Black Magic (C1) and Fall in the Hollow (C2).

Financially accessible yarn: Knit Picks Hawthorne, Knit Picks Palette

Sample is knit in the colorways Compass (C1) and Panel Tone and Cream (C2).

## NOTIONS AND TOOLS:

Circular needles in size US 4 (3.5mm).

Cable length is not vital, but it is recommended to have a longer cable length, especially if knitting size Large.

Stitch markers.

## GAUGE (not critical):

20 stitches and 46 rows after blocking =

4 inches in garter stitch.



# MALUS SHAWL



## GENERAL PATTERN NOTES:

This pattern may be divided into two files:

Size Regular (pages 4 - 1)

Size Large (pages 12 - 21)

Once you've decided which size to knit, you may print the base information pages (pages 1 - 3), and then you will only need to print the relevant pages for the corresponding size.

Charted instructions for each of the sections are included after the written instructions. Please pay careful attention to the instructions on how each chart should be utilized in the written instructions!

## ABBREVIATIONS:

C1	:	Color 1
C2	:	Color 2
PM	:	Place stitch marker
SM	:	Slip stitch marker
[ ]	:	Repeat instructions in brackets
( )	:	Number of stitches on needles at the end of the row
St(s)	:	Stitch(es)
K	:	Knit
P	:	Purl
Yo	:	Yarn over
Sl	:	Slip stitch as if to purl
Sl 1 wyif kw	:	Slip 1 st with yarn in front, as if to knit
Ssk	:	Slip 2 sts as if to knit, knit them together through the back loop
Sssk	:	Slip 3 sts as if to knit, knit them together through the back loop
K2tog	:	Knit 2 sts together
K3tog	:	Knit 3 sts together
Sl2k1p2sso	:	Slip 2 sts as if to purl, knit 1 stitch, pass slipped sts over knit st

# MALUS SHAWL



## INSTRUCTIONS FOR SIZE REGULAR:

### Garter tab set-up:

Using C1, cast on 4 sts.

K across.

Repeat this last step 9 more times, for a total of 10 rows worked.

Without turning the work, pick up 5 sts along one edge of the garter tab, then 4 stitches along the next edge (this is also the CO edge).

You will have a total of 13 sts on your needles.

From here on out,

Odd-numbered rows : Wrong Side

Even-numbered rows : Right Side

Border stitches are denoted in gray.

### Garter section:

- 1 : Sl 1 wyif kw, k2, pm, k until 3 sts remain, pm, k1, yo, k2tog
- 2) : Sl 1 wyif kw, k2, sm, k1, [yo, k1] until 3 sts remain, sm, k1, yo, k2tog (19 sts)
- 3 : Repeat row 1
- 4 : Repeat row 1
- 5 : Repeat row 1
- 6 : Sl 1 wyif kw, k2, sm, k1, [yo, k1] until 3 sts remain, sm, k1, yo, k2tog (31 sts)
- 7 : Repeat row 1
- 8 : Repeat row 1
- 9 : Repeat row 1
- 10 : Repeat row 1
- 11 : Repeat row 1
- 12 : Sl 1 wyif kw, k2, sm, k1, [yo, k1] until 3 sts remain, sm, k1, yo, k2tog (55 sts)
- 13 : Repeat row 1
- 14 : Repeat row 1
- 15 : Repeat row 1
- 16 : Repeat row 1
- 17 : Repeat row 1
- 18 : Repeat row 1
- 19 : Repeat row 1
- 20 : Repeat row 1
- 21 : Repeat row 1
- 22 : Repeat row 1
- 23 : Repeat row 1
- 24 : Sl 1 wyif kw, k2, sm, k1, [yo, k1] until 3 sts remain, sm, k1, yo, k2tog (103 sts)
- 25 : Repeat row 1

# MALUS SHAWL



## Mosaic section I:

Attach C2.

Begin working mosaic chart between stitch markers, continuing border sts as established. If working from the chart, knit one full repeat of the mosaic chart, keeping in mind the increase row on row 49.

### TIPS FOR KNITTING MOSAIC:

Every 2 rows, you will alternate working with different colors.

For example, rows 26 and 27 are worked with C2, rows 28 and 29 are worked with C1, rows 30 and 31 are worked with C2, and so on.

When slipping sts, slip sts as if to purl.

On RS rows, slip sts with the working yarn in back.

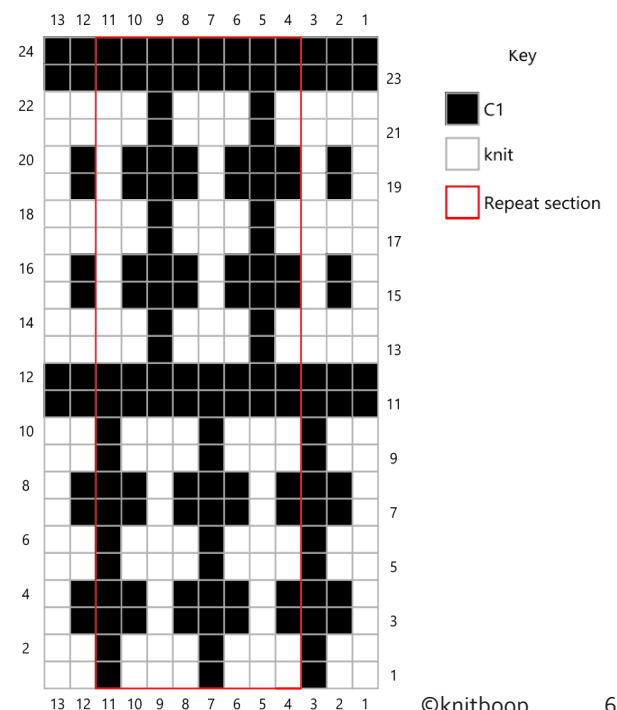
On WS rows, slip sts with the working yarn in front.

- 26 : Mosaic row 1 with C2.  
Sl 1 wyif kw, k2, sm, k2, sl 1, [k3, sl1, k3, sl1] until 5 sts remain, k2, sm, k1, yo, k2tog
- 27 : Mosaic row 2 with C2.  
Sl 1 wyif kw, k2, sm, k2, [sl1, k3, sl1, k3] until 6 sts remain, sl1, k2, sm, k1, yo, k2tog
- 28 : Mosaic row 3 with C1.  
Sl 1 wyif kw, k2, sm, sl, k2, [k1, sl1, k3, sl1, k2] until 5 sts remain, k1, sl1, sm, k1, yo, k2tog
- 29 : Mosaic row 4 with C1.  
Sl 1 wyif kw, k2, sm, sl1, k1, [k2, sl1, k3, sl1, k1] until 6 sts remain, k2, sl1, sm, k1, yo, k2tog
- 30 : Mosaic row 5 with C2.  
Sl 1 wyif kw, k2, sm, k2, sl1, [k3, sl1, k3, sl1] until 5 sts remain, k2, sm, k1, yo, k2tog
- 31 : Mosaic row 6 with C2.  
Sl 1 wyif kw, k2, sm, k2, [sl1, k3, sl1, k3] until 6 sts remain, sl1, k2, sm, k1, yo, k2tog
- 32 : Mosaic row 7 with C1.  
Sl 1 wyif kw, k2, sm, sl1, k2, [k1, sl1, k3, sl1, k2] until 5 sts remain, k1, sl1, sm, k1, yo, k2tog
- 33 : Mosaic row 8 with C1.  
Sl 1 wyif kw, k2, sm, sl1, k1, [k2, sl1, k3, sl1, k1] until 6 sts remain, k2, sl1, sm, k1, yo, k2tog
- 34 : Mosaic row 9 with C2.  
Sl 1 wyif kw, k2, sm, k2, sl1, [k3, sl1, k3, sl1] until 5 sts remain, k2, sm, k1, yo, k2tog
- 35 : Mosaic row 10 with C2.  
Sl 1 wyif kw, k2, sm, k2, [sl1, k3, sl1, k3] until 6 sts remain, sl1, k2, sm, k1, yo, k2tog
- 36 : Mosaic row 11 with C1.  
Sl 1 wyif kw, k2, sm, k until 3 sts remain, sm, k1, yo, k2tog
- 37 : Mosaic row 12 with C1.  
Sl 1 wyif kw, k2, sm, k until 3 sts remain, sm, k1, yo, k2tog

# MALUS SHAWL



- 38 : Mosaic row 13 with C2.  
Sl 1 wyif kw, k2, sm, k3, [k1, sl1, k3, sl1, k2] until 5 sts remain, k2, sm, k1, yo, k2tog
- 39 : Mosaic row 14 with C2.  
Sl 1 wyif kw, k2, sm, k2, [k2, sl1, k3, sl1, k1] until 6 sts remain, k3, sm, k1, yo, k2tog
- 40 : Mosaic row 15 with C1.  
Sl 1 wyif kw, k2, sm, sl1, k1, sl1, [k3, sl1, k3, sl1] until 5 sts remain, k1, sl1, sm, k1, yo, k2tog
- 41 : Mosaic row 16 with C1.  
Sl 1 wyif kw, k2, sm, sl1, k1, [sl1, k3, sl1, k3] until 6 sts remain, sl1, k1, sl1, sm, k1, yo, k2tog
- 42 : Mosaic row 17 with C2.  
Sl 1 wyif kw, k2, sm, k3, [k1, sl1, k3, sl1, k2] until 5 sts remain, k2, sm, k1, yo, k2tog
- 43 : Mosaic row 18 with C2.  
Sl 1 wyif kw, k2, sm, k2, [k2, sl1, k3, sl1, k1] until 6 sts remain, k3, sm, k1, yo, k2tog
- 44 : Mosaic row 19 with C1.  
Sl 1 wyif kw, k2, sm, sl1, k1, sl1, [k3, sl1, k3, sl1] until 5 sts remain, k1, sl1, sm, k1, yo, k2tog
- 45 : Mosaic row 20 with C1.  
Sl 1 wyif kw, k2, sm, sl1, k1, [sl1, k3, sl1, k3] until 6 sts remain, sl1, k1, sl1, sm, k1, yo, k2tog
- 46 : Mosaic row 21 with C2.  
Sl 1 wyif kw, k2, sm, k3, [k1, sl1, k3, sl1, k2] until 5 sts remain, k2, sm, k1, yo, k2tog
- 47 : Mosaic row 22 with C2.  
Sl 1 wyif kw, k2, sm, k2, [k2, sl1, k3, sl1, k1] until 6 sts remain, k3, sm, k1, yo, k2tog  
Cut C2, work only with C1.
- 48 : Mosaic row 23 with C1.  
Sl 1 wyif kw, k2, sm, k until 3 sts remain,  
sm, k1, yo, k2tog
- 49 : Mosaic row 24 with C1.  
Sl 1 wyif kw, k2, sm, k1, [yo, k1],  
sm, k1, yo, k2tog (199 sts)



# MALUS SHAWL



## Lace section I:

Work this section only with C1.

If working from the chart, knit four full repeats of the lace chart, keeping in mind the increase row on row 97.

- 50 : Lace row 1.  
Sl 1 wyif kw, k2, sm, k until 3 sts remain, sm, k1, yo, k2tog
- 51 : Lace row 2.  
Sl 1 wyif kw, k2, sm, p until 3 sts remain, sm, k1, yo, k2tog
- 52 : Lace row 3.  
Sl 1 wyif kw, k2, sm, [k1, yo, k1, ssk, p1, k2tog, k1, yo, p1, yo, k1, ssk, p1, k2tog, k1, yo],  
k1, sm, k1, yo, k2tog
- 53 : Lace row 4.  
Sl 1 wyif kw, k2, sm, p1, [p3, k1, p3, k1, p3, k1, p4], sm, k1, yo, k2tog
- 54 : Lace row 5.  
Sl 1 wyif kw, k2, sm, [k1, yo, k1, ssk, p1, k2tog, k1, p1, k1, ssk, p1, k2tog, k1, yo],  
k1, sm, k1, yo, k2tog
- 55 : Lace row 6.  
Sl 1 wyif kw, k2, sm, p1, [p3, k1, p2, k1, p2, k1, p4], sm, k1, yo, k2tog
- 56 : Lace row 7.  
Sl 1 wyif kw, k2, sm, [k1, yo, k1, yo, ssk, p1, k2tog, p1, ssk, p1, k2tog, yo, k1, yo],  
k1, sm, k1, yo, k2tog
- 57 : Lace row 8.  
Sl 1 wyif kw, k2, sm, p1, [p4, k1, p1, k1, p1, k1, p5], sm, k1, yo, k2tog
- 58 : Lace row 9.  
Sl 1 wyif kw, k2, sm, [k1, yo, k3, yo, sssk, p1, k3tog, yo, k3, yo], k1, sm, k1, yo, k2tog
- 59 : Lace row 10.  
Sl 1 wyif kw, k2, sm, p 1, [p6, k1, p7], sm, k1, yo, k2tog
- 60 : Lace row 11.  
Sl 1 wyif kw, k2, sm, [k1, yo, k5, yo, sl2k1p2sso, yo, k5, yo], k1, sm, k1, yo, k2tog
- 61 : Lace row 12.  
Sl 1 wyif kw, k2, sm, p until 3 sts remain, sm, k1, yo, k2tog

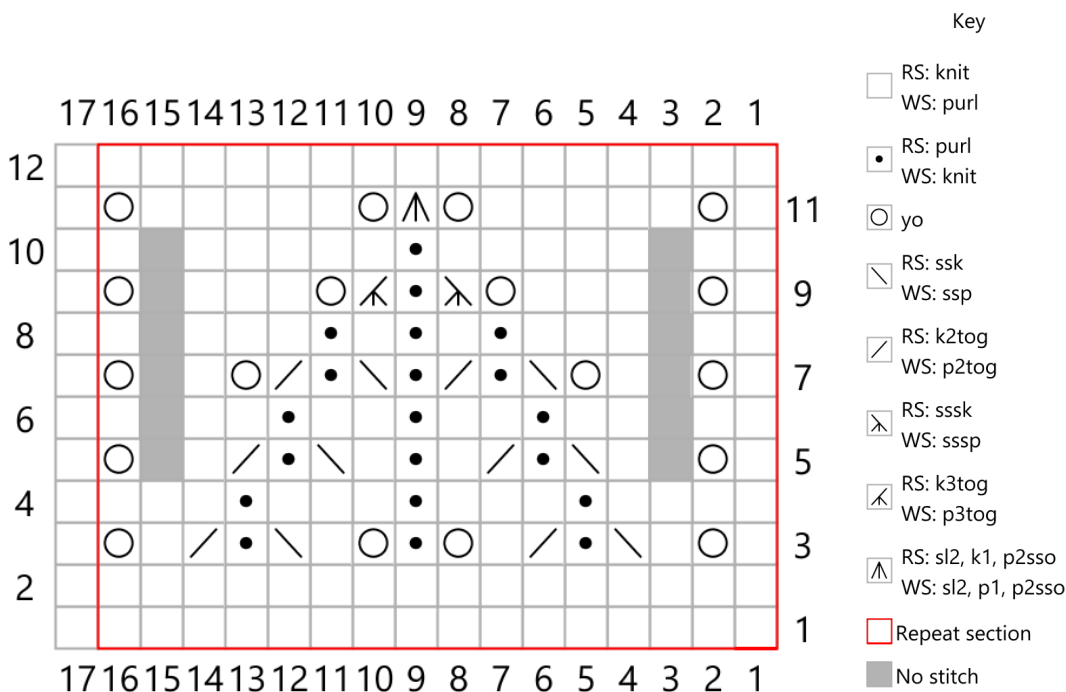
# MALUS SHAWL



62 : Repeat row 50 (Lace row 1).  
 63 : Repeat row 51 (Lace row 2).  
 64 : Repeat row 52 (Lace row 3).  
 65 : Repeat row 53 (Lace row 4).  
 66 : Repeat row 54 (Lace row 5).  
 67 : Repeat row 55 (Lace row 6).  
 68 : Repeat row 56 (Lace row 7).  
 69 : Repeat row 57 (Lace row 8).  
 70 : Repeat row 58 (Lace row 9).  
 71 : Repeat row 59 (Lace row 10).  
 72 : Repeat row 60 (Lace row 11).  
 73 : Repeat row 61 (Lace row 12).

86 : Repeat row 50 (Lace row 1).  
 87 : Repeat row 51 (Lace row 2).  
 88 : Repeat row 52 (Lace row 3).  
 89 : Repeat row 53 (Lace row 4).  
 90 : Repeat row 54 (Lace row 5).  
 91 : Repeat row 55 (Lace row 6).  
 92 : Repeat row 56 (Lace row 7).  
 93 : Repeat row 57 (Lace row 8).  
 94 : Repeat row 58 (Lace row 9).  
 95 : Repeat row 59 (Lace row 10).  
 96 : Repeat row 60 (Lace row 11).  
 97 : Sl 1 wyif kw, k2, sm, k1, [yo, k1],  
 sm, k1, yo, k2tog (391 sts)

74 : Repeat row 50 (Lace row 1).  
 75 : Repeat row 51 (Lace row 2).  
 76 : Repeat row 52 (Lace row 3).  
 77 : Repeat row 53 (Lace row 4).  
 78 : Repeat row 54 (Lace row 5).  
 79 : Repeat row 55 (Lace row 6).  
 80 : Repeat row 56 (Lace row 7).  
 81 : Repeat row 57 (Lace row 8).  
 82 : Repeat row 58 (Lace row 9).  
 83 : Repeat row 59 (Lace row 10).  
 84 : Repeat row 60 (Lace row 11).  
 85 : Repeat row 61 (Lace row 12).





# MALUS SHAWL



## Mosaic section II:

Attach C2.

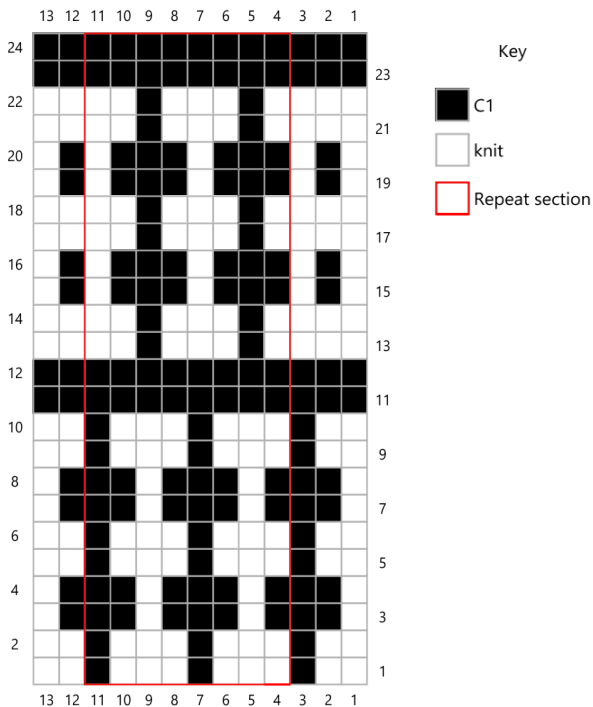
Begin working mosaic chart between stitch markers, continuing border sts as established. If working from the chart, knit rows 1 to 20 of the mosaic chart, ending with row 117. Follow written instructions for rows 118 (increase row) and 119.

- 98 : Mosaic row 1 with C2.  
Sl 1 wyif kw, k2, sm, k2, sl 1, [k3, sl1, k3, sl1] until 5 sts remain, k2, sm, k1, yo, k2tog
- 99 : Mosaic row 2 with C2.  
Sl 1 wyif kw, k2, sm, k2, [sl1, k3, sl1, k3] until 6 sts remain, sl1, k2, sm, k1, yo, k2tog
- 100 : Mosaic row 3 with C1.  
Sl 1 wyif kw, k2, sm, sl, k2, [k1, sl1, k3, sl1, k2] until 5 sts remain, k1, sl1, sm, k1, yo, k2tog
- 101 : Mosaic row 4 with C1.  
Sl 1 wyif kw, k2, sm, sl1, k1, [k2, sl1, k3, sl1, k1] until 6 sts remain, k2, sl1, sm, k1, yo, k2tog
- 102 : Mosaic row 5 with C2.  
Sl 1 wyif kw, k2, sm, k2, sl1, [k3, sl1, k3, sl1] until 5 sts remain, k2, sm, k1, yo, k2tog
- 103 : Mosaic row 6 with C2.  
Sl 1 wyif kw, k2, sm, k2, [sl1, k3, sl1, k3] until 6 sts remain, sl1, k2, sm, k1, yo, k2tog
- 104 : Mosaic row 7 with C1.  
Sl 1 wyif kw, k2, sm, sl1, k2, [k1, sl1, k3, sl1, k2] until 5 sts remain, k1, sl1, sm, k1, yo, k2tog
- 105 : Mosaic row 8 with C1.  
Sl 1 wyif kw, k2, sm, sl1, k1, [k2, sl1, k3, sl1, k1] until 6 sts remain, k2, sl1, sm, k1, yo, k2tog
- 106 : Mosaic row 9 with C2.  
Sl 1 wyif kw, k2, sm, k2, sl1, [k3, sl1, k3, sl1] until 5 sts remain, k2, sm, k1, yo, k2tog
- 107 : Mosaic row 10 with C2.  
Sl 1 wyif kw, k2, sm, k2, [sl1, k3, sl1, k3] until 6 sts remain, sl1, k2, sm, k1, yo, k2tog
- 108 : Mosaic row 11 with C1.  
Sl 1 wyif kw, k2, sm, k until 3 sts remain, sm, k1, yo, k2tog
- 109 : Mosaic row 12 with C1.  
Sl 1 wyif kw, k2, sm, k until 3 sts remain, sm, k1, yo, k2tog
- 110 : Mosaic row 13 with C2.  
Sl 1 wyif kw, k2, sm, k3, [k1, sl1, k3, sl1, k2] until 5 sts remain, k2, sm, k1, yo, k2tog
- 111 : Mosaic row 14 with C2.  
Sl 1 wyif kw, k2, sm, k2, [k2, sl1, k3, sl1, k1] until 6 sts remain, k3, sm, k1, yo, k2tog
- 112 : Mosaic row 15 with C1.  
Sl 1 wyif kw, k2, sm, sl1, k1, sl1, [k3, sl1, k3, sl1] until 5 sts remain, k1, sl1, sm, k1, yo, k2tog

# MALUS SHAWL



- 113 : Mosaic row 16 with C1.  
Sl 1 wyif kw, k2, sm, sl1, k1, [sl1, k3, sl1, k3] until 6 sts remain, sl1, k1, sl1, sm, k1, yo, k2tog
- 114 : Mosaic row 17 with C2.  
Sl 1 wyif kw, k2, sm, k3, [k1, sl1, k3, sl1, k2] until 5 sts remain, k2, sm, k1, yo, k2tog
- 115 : Mosaic row 18 with C2.  
Sl 1 wyif kw, k2, sm, k2, [k2, sl1, k3, sl1, k1] until 6 sts remain, k3, sm, k1, yo, k2tog
- 116 : Mosaic row 19 with C1.  
Sl 1 wyif kw, k2, sm, sl1, k1, sl1, [k3, sl1, k3, sl1] until 5 sts remain, k1, sl1, sm, k1, yo, k2tog
- 117 : Mosaic row 20 with C1.  
Sl 1 wyif kw, k2, sm, sl1, k1, [sl1, k3, sl1, k3] until 6 sts remain, sl1, k1, sl1, sm, k1, yo, k2tog  
Cut C1, work only with C2.
- 118 : Sl 1 wyif kw, k2, sm, k12, [yo, k12], sm, k1, yo, k2tog (422 sts)
- 119 : Sl 1 wyif kw, k2, sm, p until 3 sts remain, sm, k1, yo, k2tog



# MALUS SHAWL



## Stockinette section I:

Rows 120 to 125 will be worked in stockinette as follows:

- RS rows : Sl 1 wyif kw, k2, sm, k until 3 sts remain, sm, k1, yo, k2tog  
WS rows : Sl 1 wyif kw, k2, sm, p until 3 sts remain, sm, k1, yo, k2tog  
126 : Sl 1 wyif kw, k2, sm, k4, [yo, k2tog, k3], k1, sm, k1, yo, k2tog

Rows 127 to 133 are worked in stockinette again.

## Garter section:

Rows 134 to 141 will be worked in garter as follows:

- All rows : Sl 1 wyif kw, k2, sm, k until 3 sts remain, sm, k1, yo, k2tog

## Stockinette section II:

- 142 : Sl 1 wyif kw, k2, sm, k5, [yo, k5], k1, sm, k1, yo, k2tog (504 sts)

Rows 143 to 149 are worked in stockinette as before.

## Garter lace section:

Cut C2, attach C1 to work garter lace section.

- 150 : Sl 1 wyif kw, k2, sm, k6, [yo, k2tog, k5], k2, sm, k1, yo, k2tog (504 sts)  
151 : Sl 1 wyif kw, k2, sm, knit across, sm, k1, yo, k2tog  
152 : Garter lace row 1.  
Sl 1 wyif kw, k2, sm, [k1, yo, k1, ssk, k2tog, k1, yo], k1, sm, k1, yo, k2tog  
153 : Garter lace row 2.  
Sl 1 wyif kw, k2, sm, k until 3 sts remain, sm, k1, yo, k2tog  
154 : Garter lace row 3.  
Sl 1 wyif kw, k2, sm, [k2, yo, ssk, k2tog, yo, k1], k1, sm, k1, yo, k2tog  
155 : Garter lace row 4.  
Sl 1 wyif kw, k2, sm, k until 3 sts remain, sm, k1, yo, k2tog  
156 : Repeat row 152 (Garter lace row 1).  
157 : Repeat row 153 (Garter lace row 2).  
158 : Repeat row 154 (Garter lace row 3).  
159 : Repeat row 155 (Garter lace row 4).

## Finishing:

Bind off loosely.

Block, and enjoy!

# MALUS SHAWL



## INSTRUCTIONS FOR SIZE LARGE:

### Garter tab set-up:

Using C1, cast on 4 sts.

K across.

Repeat this last step 9 more times, for a total of 10 rows worked.

Without turning the work, pick up 5 sts along one edge of the garter tab, then 4 stitches along the next edge (this is also the CO edge).

You will have a total of 13 sts on your needles.

From here on out,

Odd-numbered rows : Wrong Side

Even-numbered rows : Right Side

Border stitches are denoted in gray.

### Garter section:

- 1 : Sl 1 wyif kw, k2, pm, k until 3 sts remain, pm, k1, yo, k2tog
- 2) : Sl 1 wyif kw, k2, sm, k1, [yo, k1] until 3 sts remain, sm, k1, yo, k2tog (19 sts)
- 3 : Repeat row 1
- 4 : Repeat row 1
- 5 : Repeat row 1
- 6 : Sl 1 wyif kw, k2, sm, k1, [yo, k1] until 3 sts remain, sm, k1, yo, k2tog (31 sts)
- 7 : Repeat row 1
- 8 : Repeat row 1
- 9 : Repeat row 1
- 10 : Repeat row 1
- 11 : Repeat row 1
- 12 : Sl 1 wyif kw, k2, sm, k1, [yo, k1] until 3 sts remain, sm, k1, yo, k2tog (55 sts)
- 13 : Repeat row 1
- 14 : Repeat row 1
- 15 : Repeat row 1
- 16 : Repeat row 1
- 17 : Repeat row 1
- 18 : Repeat row 1
- 19 : Repeat row 1
- 20 : Repeat row 1
- 21 : Repeat row 1
- 22 : Repeat row 1
- 23 : Repeat row 1
- 24 : Sl 1 wyif kw, k2, sm, k1, [yo, k1] until 3 sts remain, sm, k1, yo, k2tog (103 sts)
- 25 : Repeat row 1

# MALUS SHAWL



## Mosaic section I:

Attach C2.

Begin working mosaic chart between stitch markers, continuing border sts as established. If working from the chart, knit one full repeat of the mosaic chart, keeping in mind the increase row on row 49.

Knit another half repeat of the mosaic chart, ending with row 61 (mosaic row 12).

### TIPS FOR KNITTING MOSAIC:

Every 2 rows, you will alternate working with different colors.

For example, rows 26 and 27 are worked with C2, rows 28 and 29 are worked with C1, rows 30 and 31 are worked with C2, and so on.

When slipping sts, slip sts as if to purl.

On RS rows, slip sts with the working yarn in back.

On WS rows, slip sts with the working yarn in front.

- 26 : Mosaic row 1 with C2.  
Sl 1 wyif kw, k2, sm, k2, sl 1, [k3, sl1, k3, sl1] until 5 sts remain, k2, sm, k1, yo, k2tog
- 27 : Mosaic row 2 with C2.  
Sl 1 wyif kw, k2, sm, k2, [sl1, k3, sl1, k3] until 6 sts remain, sl1, k2, sm, k1, yo, k2tog
- 28 : Mosaic row 3 with C1.  
Sl 1 wyif kw, k2, sm, sl, k2, [k1, sl1, k3, sl1, k2] until 5 sts remain, k1, sl1, sm, k1, yo, k2tog
- 29 : Mosaic row 4 with C1.  
Sl 1 wyif kw, k2, sm, sl1, k1, [k2, sl1, k3, sl1, k1] until 6 sts remain, k2, sl1, sm, k1, yo, k2tog
- 30 : Mosaic row 5 with C2.  
Sl 1 wyif kw, k2, sm, k2, sl1, [k3, sl1, k3, sl1] until 5 sts remain, k2, sm, k1, yo, k2tog
- 31 : Mosaic row 6 with C2.  
Sl 1 wyif kw, k2, sm, k2, [sl1, k3, sl1, k3] until 6 sts remain, sl1, k2, sm, k1, yo, k2tog
- 32 : Mosaic row 7 with C1.  
Sl 1 wyif kw, k2, sm, sl1, k2, [k1, sl1, k3, sl1, k2] until 5 sts remain, k1, sl1, sm, k1, yo, k2tog
- 33 : Mosaic row 8 with C1.  
Sl 1 wyif kw, k2, sm, sl1, k1, [k2, sl1, k3, sl1, k1] until 6 sts remain, k2, sl1, sm, k1, yo, k2tog
- 34 : Mosaic row 9 with C2.  
Sl 1 wyif kw, k2, sm, k2, sl1, [k3, sl1, k3, sl1] until 5 sts remain, k2, sm, k1, yo, k2tog
- 35 : Mosaic row 10 with C2.  
Sl 1 wyif kw, k2, sm, k2, [sl1, k3, sl1, k3] until 6 sts remain, sl1, k2, sm, k1, yo, k2tog
- 36 : Mosaic row 11 with C1.  
Sl 1 wyif kw, k2, sm, k until 3 sts remain, sm, k1, yo, k2tog
- 37 : Mosaic row 12 with C1.  
Sl 1 wyif kw, k2, sm, k until 3 sts remain, sm, k1, yo, k2tog

# MALUS SHAWL

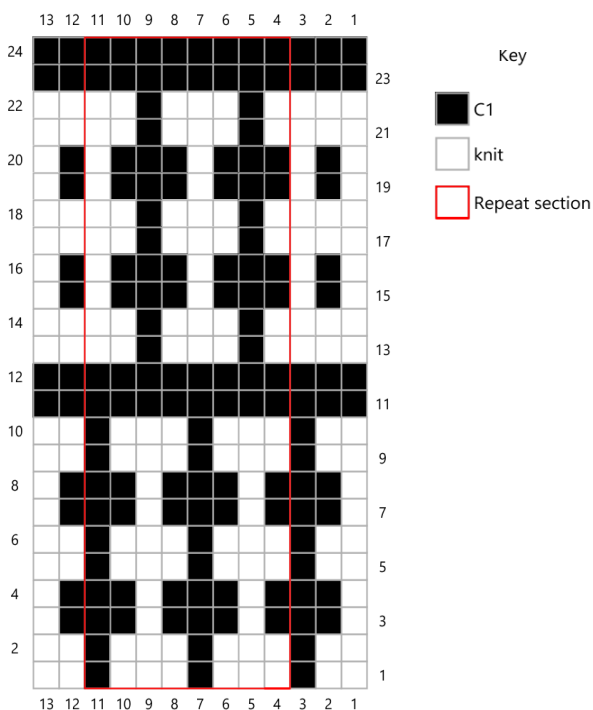


- 38 : Mosaic row 13 with C2.  
Sl 1 wyif kw, k2, sm, k3, [k1, sl1, k3, sl1, k2] until 5 sts remain, k2, sm, k1, yo, k2tog
- 39 : Mosaic row 14 with C2.  
Sl 1 wyif kw, k2, sm, k2, [k2, sl1, k3, sl1, k1] until 6 sts remain, k3, sm, k1, yo, k2tog
- 40 : Mosaic row 15 with C1.  
Sl 1 wyif kw, k2, sm, sl1, k1, sl1, [k3, sl1, k3, sl1] until 5 sts remain, k1, sl1, sm, k1, yo, k2tog
- 41 : Mosaic row 16 with C1.  
Sl 1 wyif kw, k2, sm, sl1, k1, [sl1, k3, sl1, k3] until 6 sts remain, sl1, k1, sl1, sm, k1, yo, k2tog
- 42 : Mosaic row 17 with C2.  
Sl 1 wyif kw, k2, sm, k3, [k1, sl1, k3, sl1, k2] until 5 sts remain, k2, sm, k1, yo, k2tog
- 43 : Mosaic row 18 with C2.  
Sl 1 wyif kw, k2, sm, k2, [k2, sl1, k3, sl1, k1] until 6 sts remain, k3, sm, k1, yo, k2tog
- 44 : Mosaic row 19 with C1.  
Sl 1 wyif kw, k2, sm, sl1, k1, sl1, [k3, sl1, k3, sl1] until 5 sts remain, k1, sl1, sm, k1, yo, k2tog
- 45 : Mosaic row 20 with C1.  
Sl 1 wyif kw, k2, sm, sl1, k1, [sl1, k3, sl1, k3] until 6 sts remain, sl1, k1, sl1, sm, k1, yo, k2tog
- 46 : Mosaic row 21 with C2.  
Sl 1 wyif kw, k2, sm, k3, [k1, sl1, k3, sl1, k2] until 5 sts remain, k2, sm, k1, yo, k2tog
- 47 : Mosaic row 22 with C2.  
Sl 1 wyif kw, k2, sm, k2, [k2, sl1, k3, sl1, k1] until 6 sts remain, k3, sm, k1, yo, k2tog
- 48 : Mosaic row 23 with C1.  
Sl 1 wyif kw, k2, sm, k until 3 sts remain, sm, k1, yo, k2tog
- 49 : Mosaic row 24 with C1.  
Sl 1 wyif kw, k2, sm, k1, [yo, k1], sm, k1, yo, k2tog (199 sts)
- 50 : Mosaic row 1 with C2.  
Sl 1 wyif kw, k2, sm, k2, sl 1, [k3, sl1, k3, sl1] until 5 sts remain, k2, sm, k1, yo, k2tog
- 51 : Mosaic row 2 with C2.  
Sl 1 wyif kw, k2, sm, k2, [sl1, k3, sl1, k3] until 6 sts remain, sl1, k2, sm, k1, yo, k2tog
- 52 : Mosaic row 3 with C1.  
Sl 1 wyif kw, k2, sm, sl, k2, [k1, sl1, k3, sl1, k2] until 5 sts remain, k1, sl1, sm, k1, yo, k2tog
- 53 : Mosaic row 4 with C1.  
Sl 1 wyif kw, k2, sm, sl1, k1, [k2, sl1, k3, sl1, k1] until 6 sts remain, k2, sl1, sm, k1, yo, k2tog
- 54 : Mosaic row 5 with C2.  
Sl 1 wyif kw, k2, sm, k2, sl1, [k3, sl1, k3, sl1] until 5 sts remain, k2, sm, k1, yo, k2tog
- 55 : Mosaic row 6 with C2.  
Sl 1 wyif kw, k2, sm, k2, [sl1, k3, sl1, k3] until 6 sts remain, sl1, k2, sm, k1, yo, k2tog

# MALUS SHAWL



- 56 : Mosaic row 7 with C1.  
Sl 1 wyif kw, k2, sm, sl1, k2, [k1, sl1, k3, sl1, k2] until 5 sts remain, k1, sl1, sm, k1, yo, k2tog
- 57 : Mosaic row 8 with C1.  
Sl 1 wyif kw, k2, sm, sl1, k1, [k2, sl1, k3, sl1, k1] until 6 sts remain, k2, sl1, sm, k1, yo, k2tog
- 58 : Mosaic row 9 with C2.  
Sl 1 wyif kw, k2, sm, k2, sl1, [k3, sl1, k3, sl1] until 5 sts remain, k2, sm, k1, yo, k2tog
- 59 : Mosaic row 10 with C2.  
Sl 1 wyif kw, k2, sm, k2, [sl1, k3, sl1, k3] until 6 sts remain, sl1, k2, sm, k1, yo, k2tog  
Cut C2, work only with C1.
- 60 : Mosaic row 11 with C1.  
Sl 1 wyif kw, k2, sm, k until 3 sts remain, sm, k1, yo, k2tog
- 61 : Mosaic row 12 with C1.  
Sl 1 wyif kw, k2, sm, k until 3 sts remain, sm, k1, yo, k2tog



# MALUS SHAWL



## Lace section I:

Work this section only with C1.

If working from the chart, knit four full repeats of the lace chart, keeping in mind the increase row on row 98.

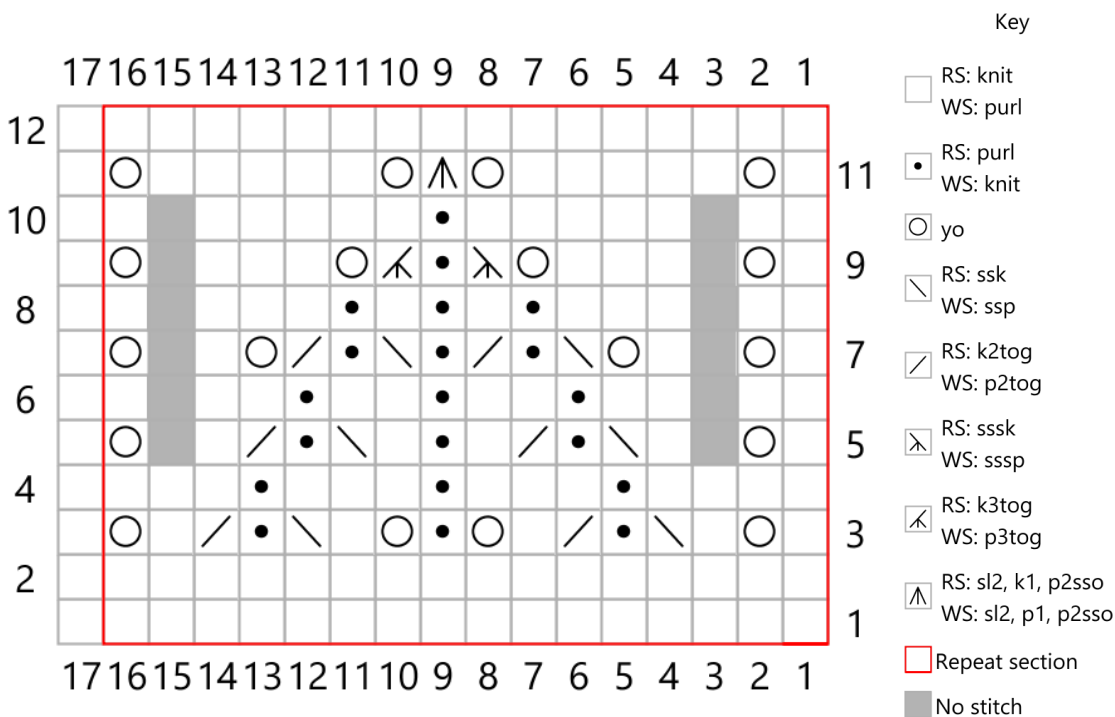
- 62 : Lace row 1.  
Sl 1 wyif kw, k2, sm, k until 3 sts remain, sm, k1, yo, k2tog
- 63 : Lace row 2.  
Sl 1 wyif kw, k2, sm, p until 3 sts remain, sm, k1, yo, k2tog
- 64 : Lace row 3.  
Sl 1 wyif kw, k2, sm, [k1, yo, k1, ssk, p1, k2tog, k1, yo, p1, yo, k1, ssk, p1, k2tog, k1, yo],  
k1, sm, k1, yo, k2tog
- 65 : Lace row 4.  
Sl 1 wyif kw, k2, sm, p1, [p3, k1, p3, k1, p3, k1, p4], sm, k1, yo, k2tog
- 66 : Lace row 5.  
Sl 1 wyif kw, k2, sm, [k1, yo, k1, ssk, p1, k2tog, k1, p1, k1, ssk, p1, k2tog, k1, yo],  
k1, sm, k1, yo, k2tog
- 67 : Lace row 6.  
Sl 1 wyif kw, k2, sm, p1, [p3, k1, p2, k1, p2, k1, p4], sm, k1, yo, k2tog
- 68 : Lace row 7.  
Sl 1 wyif kw, k2, sm, [k1, yo, k1, yo, ssk, p1, k2tog, p1, ssk, p1, k2tog, yo, k1, yo],  
k1, sm, k1, yo, k2tog
- 69 : Lace row 8.  
Sl 1 wyif kw, k2, sm, p1, [p4, k1, p1, k1, p1, k1, p5], sm, k1, yo, k2tog
- 70 : Lace row 9.  
Sl 1 wyif kw, k2, sm, [k1, yo, k3, yo, sssk, p1, k3tog, yo, k3, yo], k1, sm, k1, yo, k2tog
- 71 : Lace row 10.  
Sl 1 wyif kw, k2, sm, p 1, [p6, k1, p7], sm, k1, yo, k2tog
- 72 : Lace row 11.  
Sl 1 wyif kw, k2, sm, [k1, yo, k5, yo, sl2k1p2sso, yo, k5, yo], k1, sm, k1, yo, k2tog
- 73 : Lace row 12.  
Sl 1 wyif kw, k2, sm, p until 3 sts remain, sm, k1, yo, k2tog



# MALUS SHAWL



- |    |   |                              |     |   |                                     |
|----|---|------------------------------|-----|---|-------------------------------------|
| 74 | : | Repeat row 62 (Lace row 1).  | 98  | : | Sl 1 wyif kw, k2, sm, k1, [yo, k1], |
| 75 | : | Repeat row 63 (Lace row 2).  |     | : | sm, k1, yo, k2tog (391 sts)         |
| 76 | : | Repeat row 64 (Lace row 3).  | 99  | : | Repeat row 63 (Lace row 2).         |
| 77 | : | Repeat row 65 (Lace row 4).  | 100 | : | Repeat row 64 (Lace row 3).         |
| 78 | : | Repeat row 66 (Lace row 5).  | 101 | : | Repeat row 65 (Lace row 4).         |
| 79 | : | Repeat row 67 (Lace row 6).  | 102 | : | Repeat row 66 (Lace row 5).         |
| 80 | : | Repeat row 68 (Lace row 7).  | 103 | : | Repeat row 67 (Lace row 6).         |
| 81 | : | Repeat row 69 (Lace row 8).  | 104 | : | Repeat row 68 (Lace row 7).         |
| 82 | : | Repeat row 70 (Lace row 9).  | 105 | : | Repeat row 69 (Lace row 8).         |
| 83 | : | Repeat row 71 (Lace row 10). | 106 | : | Repeat row 70 (Lace row 9).         |
| 84 | : | Repeat row 72 (Lace row 11). | 107 | : | Repeat row 71 (Lace row 10).        |
| 85 | : | Repeat row 73 (Lace row 12). | 108 | : | Repeat row 72 (Lace row 11).        |
|    |   |                              | 109 | : | Repeat row 73 (Lace row 12).        |
- 
- |    |   |                              |
|----|---|------------------------------|
| 86 | : | Repeat row 62 (Lace row 1).  |
| 87 | : | Repeat row 63 (Lace row 2).  |
| 88 | : | Repeat row 64 (Lace row 3).  |
| 89 | : | Repeat row 65 (Lace row 4).  |
| 90 | : | Repeat row 66 (Lace row 5).  |
| 91 | : | Repeat row 67 (Lace row 6).  |
| 92 | : | Repeat row 68 (Lace row 7).  |
| 93 | : | Repeat row 69 (Lace row 8).  |
| 94 | : | Repeat row 70 (Lace row 9).  |
| 95 | : | Repeat row 71 (Lace row 10). |
| 96 | : | Repeat row 72 (Lace row 11). |
| 97 | : | Repeat row 73 (Lace row 12). |



# MALUS SHAWL



## Mosaic section II:

Attach C2.

Begin working mosaic chart between stitch markers, continuing border sts as established.

If working from the chart, knit one full repeat of the mosaic chart.

Knit another 8 rows of the mosaic chart, ending with row 141.

Follow written instructions for rows 142 (increase row) and 143.

- 110 : Mosaic row 1 with C2.  
Sl 1 wyif kw, k2, sm, k2, sl 1, [k3, sl1, k3, sl1] until 5 sts remain, k2, sm, k1, yo, k2tog
- 111 : Mosaic row 2 with C2.  
Sl 1 wyif kw, k2, sm, k2, [sl1, k3, sl1, k3] until 6 sts remain, sl1, k2, sm, k1, yo, k2tog
- 112 : Mosaic row 3 with C1.  
Sl 1 wyif kw, k2, sm, sl, k2, [k1, sl1, k3, sl1, k2] until 5 sts remain, k1, sl1, sm, k1, yo, k2tog
- 113 : Mosaic row 4 with C1.  
Sl 1 wyif kw, k2, sm, sl1, k1, [k2, sl1, k3, sl1, k1] until 6 sts remain, k2, sl1, sm, k1, yo, k2tog
- 114 : Mosaic row 5 with C2.  
Sl 1 wyif kw, k2, sm, k2, sl1, [k3, sl1, k3, sl1] until 5 sts remain, k2, sm, k1, yo, k2tog
- 115 : Mosaic row 6 with C2.  
Sl 1 wyif kw, k2, sm, k2, [sl1, k3, sl1, k3] until 6 sts remain, sl1, k2, sm, k1, yo, k2tog
- 116 : Mosaic row 7 with C1.  
Sl 1 wyif kw, k2, sm, sl1, k2, [k1, sl1, k3, sl1, k2] until 5 sts remain, k1, sl1, sm, k1, yo, k2tog
- 117 : Mosaic row 8 with C1.  
Sl 1 wyif kw, k2, sm, sl1, k1, [k2, sl1, k3, sl1, k1] until 6 sts remain, k2, sl1, sm, k1, yo, k2tog
- 118 : Mosaic row 9 with C2.  
Sl 1 wyif kw, k2, sm, k2, sl1, [k3, sl1, k3, sl1] until 5 sts remain, k2, sm, k1, yo, k2tog
- 119 : Mosaic row 10 with C2.  
Sl 1 wyif kw, k2, sm, k2, [sl1, k3, sl1, k3] until 6 sts remain, sl1, k2, sm, k1, yo, k2tog
- 120 : Mosaic row 11 with C1.  
Sl 1 wyif kw, k2, sm, k until 3 sts remain, sm, k1, yo, k2tog
- 121 : Mosaic row 12 with C1.  
Sl 1 wyif kw, k2, sm, k until 3 sts remain, sm, k1, yo, k2tog
- 122 : Mosaic row 13 with C2.  
Sl 1 wyif kw, k2, sm, k3, [k1, sl1, k3, sl1, k2] until 5 sts remain, k2, sm, k1, yo, k2tog
- 123 : Mosaic row 14 with C2.  
Sl 1 wyif kw, k2, sm, k2, [k2, sl1, k3, sl1, k1] until 6 sts remain, k3, sm, k1, yo, k2tog

# MALUS SHAWL

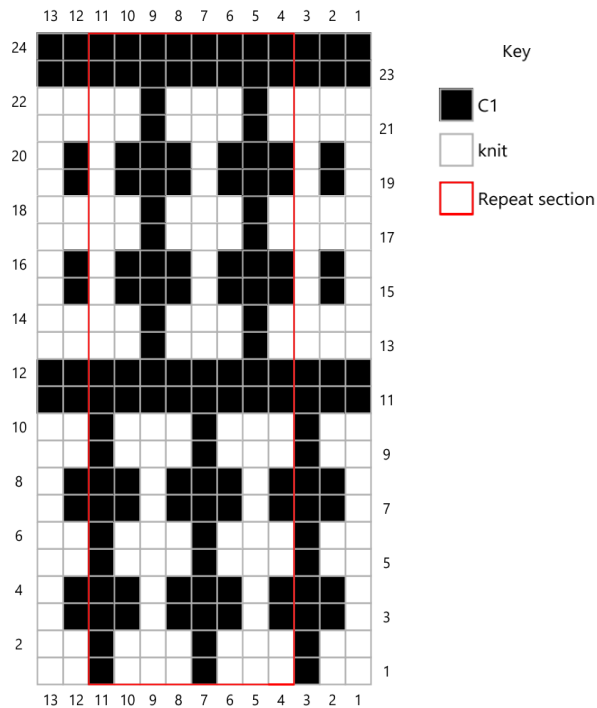


- 124 : Mosaic row 15 with C1.  
Sl 1 wyif kw, k2, sm, sl1, k1, sl1, [k3, sl1, k3, sl1] until 5 sts remain, k1, sl1, sm, k1, yo, k2tog
- 125 : Mosaic row 16 with C1.  
Sl 1 wyif kw, k2, sm, sl1, k1, [sl1, k3, sl1, k3] until 6 sts remain, sl1, k1, sl1, sm, k1, yo, k2tog
- 126 : Mosaic row 17 with C2.  
Sl 1 wyif kw, k2, sm, k3, [k1, sl1, k3, sl1, k2] until 5 sts remain, k2, sm, k1, yo, k2tog
- 127 : Mosaic row 18 with C2.  
Sl 1 wyif kw, k2, sm, k2, [k2, sl1, k3, sl1, k1] until 6 sts remain, k3, sm, k1, yo, k2tog
- 128 : Mosaic row 19 with C1.  
Sl 1 wyif kw, k2, sm, sl1, k1, sl1, [k3, sl1, k3, sl1] until 5 sts remain, k1, sl1, sm, k1, yo, k2tog
- 129 : Mosaic row 20 with C1.  
Sl 1 wyif kw, k2, sm, sl1, k1, [sl1, k3, sl1, k3] until 6 sts remain, sl1, k1, sl1, sm, k1, yo, k2tog
- 130 : Mosaic row 21 with C2.  
Sl 1 wyif kw, k2, sm, k3, [k1, sl1, k3, sl1, k2] until 5 sts remain, k2, sm, k1, yo, k2tog
- 131 : Mosaic row 22 with C2.  
Sl 1 wyif kw, k2, sm, k2, [k2, sl1, k3, sl1, k1] until 6 sts remain, k3, sm, k1, yo, k2tog
- 132 : Mosaic row 23 with C1.  
Sl 1 wyif kw, k2, sm, k until 3 sts remain, sm, k1, yo, k2tog
- 133 : Mosaic row 24 with C1.  
Sl 1 wyif kw, k2, sm, k until 3 sts remain, sm, k1, yo, k2tog
- 134 : Mosaic row 1 with C2.  
Sl 1 wyif kw, k2, sm, k2, sl 1, [k3, sl1, k3, sl1] until 5 sts remain, k2, sm, k1, yo, k2tog
- 135 : Mosaic row 2 with C2.  
Sl 1 wyif kw, k2, sm, k2, [sl1, k3, sl1, k3] until 6 sts remain, sl1, k2, sm, k1, yo, k2tog
- 136 : Mosaic row 3 with C1.  
Sl 1 wyif kw, k2, sm, sl, k2, [k1, sl1, k3, sl1, k2] until 5 sts remain, k1, sl1, sm, k1, yo, k2tog
- 137 : Mosaic row 4 with C1.  
Sl 1 wyif kw, k2, sm, sl1, k1, [k2, sl1, k3, sl1, k1] until 6 sts remain, k2, sl1, sm, k1, yo, k2tog
- 138 : Mosaic row 5 with C2.  
Sl 1 wyif kw, k2, sm, k2, sl1, [k3, sl1, k3, sl1] until 5 sts remain, k2, sm, k1, yo, k2tog
- 139 : Mosaic row 6 with C2.  
Sl 1 wyif kw, k2, sm, k2, [sl1, k3, sl1, k3] until 6 sts remain, sl1, k2, sm, k1, yo, k2tog
- 140 : Mosaic row 7 with C1.  
Sl 1 wyif kw, k2, sm, sl1, k2, [k1, sl1, k3, sl1, k2] until 5 sts remain, k1, sl1, sm, k1, yo, k2tog
- 141 : Mosaic row 8 with C1.  
Sl 1 wyif kw, k2, sm, sl1, k1, [k2, sl1, k3, sl1, k1] until 6 sts remain, k2, sl1, sm, k1, yo, k2tog  
Cut C1, work only with C2.

# MALUS SHAWL



- 142 : Sl 1 wyif kw, k2, sm, k12, [yo, k12] until 4 sts remain, k1, sm, k1, yo, k2tog (422 sts).  
 143 : Sl 1 wyif kw, k2, sm, p until 3 sts remain, sm, k1, yo, k2tog



## Stockinette section I:

Rows 144 to 149 will be worked in stockinette as follows:

RS rows : Sl 1 wyif kw, k2, sm, k until 3 sts remain, sm, k1, yo, k2tog

WS rows : Sl 1 wyif kw, k2, sm, p until 3 sts remain, sm, k1, yo, k2tog

150 : Sl 1 wyif kw, k2, sm, [k2, yo, k2] until 3 sts remain, sm, k1, yo, k2tog (526 sts).

Rows 151 to 157 are worked in stockinette again.

# MALUS SHAWL



## Garter section:

Rows 158 to 165 will be worked in garter as follows:

All rows : Sl 1 wyif kw, k2, sm, k until 3 sts remain, sm, k1, yo, k2tog

166 : Sl 1 wyif kw, k2, sm, [k2, yo, k2] until 3 sts remain, sm, k1, yo, k2tog (656 sts).

167 : Sl 1 wyif kw, k2, sm, p until 3 sts remain, sm, k1, yo, k2tog

## Stockinette section II:

Rows 168 to 173 are worked in stockinette as before.

## Garter lace section:

At this point in time, if you would like to use a different color for the garter lace section, cut yarn and attach yarn accordingly.

The first row of this section re-establishes the border stitches. Please remove the old stitch markers and place new stitch markers to indicate new borders.

174 : Garter lace row 1.  
Sl 1 wyif kw, k1, sm, [k1, yo, k1, ssk, k2tog, k1, yo], k1, sm, k1, yo, k2tog

175 : Garter lace row 2.  
Sl 1 wyif kw, k1, sm, k until 3 sts remain, sm, k1, yo, k2tog

176 : Garter lace row 3.  
Sl 1 wyif kw, k1, sm, [k2, yo, ssk, k2tog, yo, k1], k1, sm, k1, yo, k2tog

177 : Garter lace row 4.  
Sl 1 wyif kw, k1, sm, k until 3 sts remain, sm, k1, yo, k2tog

178 : Repeat row 174 (Garter lace row 1).

179 : Repeat row 175 (Garter lace row 2).

180 : Repeat row 176 (Garter lace row 3).

181 : Repeat row 177 (Garter lace row 4).

182 : Repeat row 174 (Garter lace row 1).

183 : Repeat row 175 (Garter lace row 2).

184 : Repeat row 176 (Garter lace row 3).

185 : Repeat row 177 (Garter lace row 4).

## Finishing:

Bind off loosely.

Block, and enjoy!

Please feel free to contact me for pattern support.

If you like my work, consider tipping me through [ko-fi.com/knitboop](https://ko-fi.com/knitboop)  
Website: <https://www.knitboop.com/>  
Instagram: [@knitboop](https://www.instagram.com/knitboop)

Feel free to sell completed projects. However, please do not distribute the pattern without permission.

Many thanks to my test knitters  
[@aimeesmith30](https://www.instagram.com/aimeesmith30), [@alyssifer](https://www.instagram.com/alyssifer), [@ambroseknits](https://www.instagram.com/ambroseknits), [@amturk13](https://www.instagram.com/amturk13),  
[@chaseharpole](https://www.instagram.com/chaseharpole), [@kimdyesyarn](https://www.instagram.com/kimdyesyarn), [@lady\\_ertain](https://www.instagram.com/lady_ertain), [@michieknits](https://www.instagram.com/michieknits),  
[@tashalouizamc](https://www.instagram.com/tashalouizamc), [@thatsme.galfriday](https://www.instagram.com/thatsme.galfriday), [@yarnworthyarn](https://www.instagram.com/yarnworthyarn)