



NAMU



a cowl pattern by knitboop

“Namu” (나무) is the Korean word for “tree”. In traditional Korean paintings, the tree symbolizes resilience, constancy, and strength, and their gnarled and twisted nature is depicted in the all-over cabled motif.

Wear this cowl when seeking warmth, like hiking in colder weather.

Knit it snug with soft yarn for next-to-skin coziness, or extra long to loop around your neck.

NAMU

SIZES: S (L)

Size may be adjusted by casting on any multiple of 18 stitches.

YARN AND YARDAGE:

Worsted weight, 220 yards (400 yards).

Suggested yarn:

Neighborhood Fiber Co.

Studio Worsted.

Sample is knit in the colorway

Stephen Town

NOTIONS AND TOOLS:

Circular needles in sizes

US 6 (4mm) and US 7 (4.5mm).

Optional: stitch markers, cabling needles.

DIFFICULTY:

Intermediate.

This cowl is worked in the round.

STITCHES:

RC (C4B):

Slip the first number of stitches from left needle onto cable needle, hold in back. Work the next number of stitches, then slip the stitches from the cable needle onto your left needle. Work those stitches.

LC (C4F):

Slip the first number of stitches from left needle onto cable needle, hold in front. Work the next number of stitches, then slip the stitches from the cable needle onto your left needle. Work those stitches.





INSTRUCTIONS:

Cast on 108 (234) stitches using smaller needles and your preferred cast on method.

[Long tail cast on](#)

[Old Norwegian cast on](#)

Join to knit in the round, being careful not to twist your stitches.

Work a twisted rib (*p1, k1tbl*) for 8 rows, or until you achieve the desired length.

Using larger needles, begin working the cable chart, or follow the written instructions. You will be working 6 (13) repeats of the chart per round.

(Optional stitch markers may help you keep track here.)

Repeat the cable chart (rows 2-23) until you achieve the desired length.

(Sample knit works 2 repeats of the chart.)

Using smaller needles, work a twisted rib for 8 rows, or the same amount of rows you worked before the cable chart.

Bind off using a stretchy bind off.

[Lori's stretchy bind off](#)

Block and enjoy!





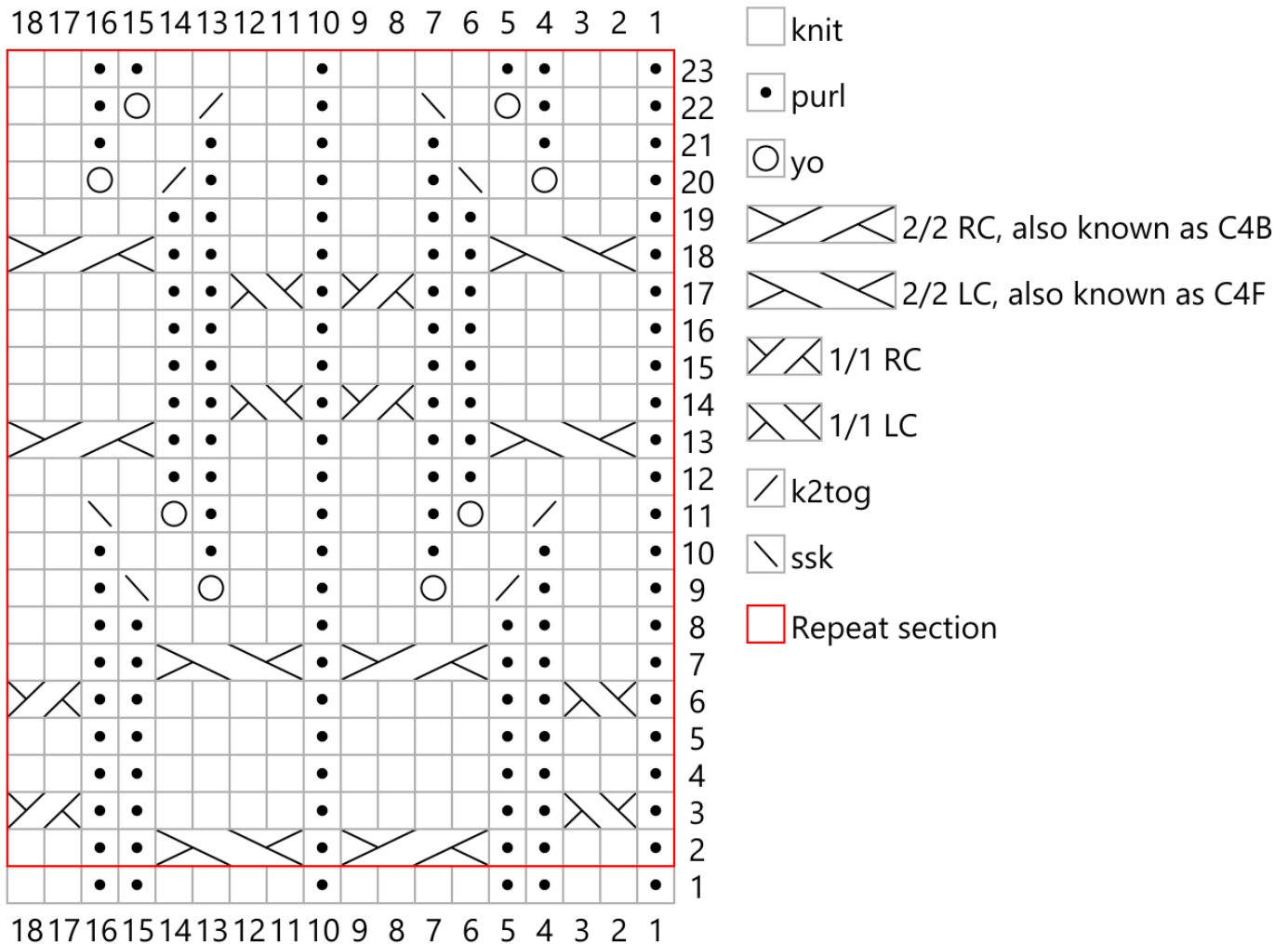
WRITTEN CABLE INSTRUCTIONS:

- Rnd 1: P1, k2, p2, k4, p1, k4, p2, k2 (18 sts).
Rnd 2: P1, k2, p2, 2/2 RC, p1, 2/2 LC, p2, k2.
Rnd 3: P1, 1/1 LC, p2, k4, p1, k4, p2, 1/1RC.
Rnd 4: P1, k2, p2, k4, p1, k4, p2, k2.
Rnd 5: Repeat Rnd 4.
Rnd 6: Repeat Rnd 3.
Rnd 7: Repeat Rnd 2.
Rnd 8: Repeat Rnd 4.
Rnd 9: P1, k2, p1, k2tog, k1, yo, k2, p1, k2, yo, k1, ssk, p1, k2.
Rnd 10: *P1, k2*.
Rnd 11: P1, k2, k2tog, k1, yo, p1, k2, p1, k2, p1, yo, k1, ssk, k2.
Rnd 12: P1, k4, p2, k2, p1, k2, p2, k4.
Rnd 13: P1, 2/2 LC, p2, k2, p1, k2, p2, 2/2 RC.
Rnd 14: P1, k4, p2, 1/1 RC, p1, 1/1 LC, p2, k4.
Rnd 15: P1, k4, p2, k2, p1, k2, p2, k4.
Rnd 16: Repeat Rnd 15.
Rnd 17: Repeat Rnd 14.
Rnd 18: Repeat Rnd 13.
Rnd 19: Repeat Rnd 12.
Rnd 20: P1, k2, yo, k1, ssk, p1, k2, p1, k2, p1, k2tog, k1, yo, k2.
Rnd 21: Repeat Rnd 10.
Rnd 22: P1, k2, p1, yo, k1, ssk, k2, p1, k2, k2tog, k1, yo, p1, k2.
Rnd 23: Repeat Rnd 4.

Repeat Rnds 2-23 until desired length is achieved.

NAMU

Key



Many thanks to my test knitters:

On Instagram: @boo.pea, @dallasanne319, @ladybug.lily, @liv.knits, @lalladesigns, @punk_momma, @theknottykat.insta, @will_knit_for_a_degree, @witchymashedpotatoes.

Please feel free to contact me for pattern support.

If you like my work, consider tipping me through ko-fi.com/knitboop

Ravelry: [knitboop](https://www.ravelry.com/patterns/library/knitboop)

Instagram: [@knitboop](https://www.instagram.com/knitboop)

Feel free to sell completed projects. However, please do not distribute the pattern without permission.

©knitboop

©knitboop

한겨울 낙엽진 나무가 온 산에 가득새도
눈 속에 비슷비슷하니 그 모습 분별 못하겠네
홀로 봄빛 띠고 어느 곳에 있는고
높은 산 위에 우뚝 선 한 그루 소나무

박익 (1332-1398)

The winter mountain is full of leafless trees
But in the snow they are not discernible.
Alone, with spring-like colors
Stands a lone pine tree on the tall mountain.

Traditional "si-jo" poem by
Bak-ik, Korean poet (1332-1398)

산수도 by 노수현, traditional Korean painter (1899-1978)

